

Columbia Sportswear Renovation

PORTLAND, OREGON

Services

MEP Engineering
Building Technologies
Fire/Life Safety
Lighting

FAST FACTS

Architect

GBD Architects

Completion

April 2008

Building Size

18,000 sf

Project Cost

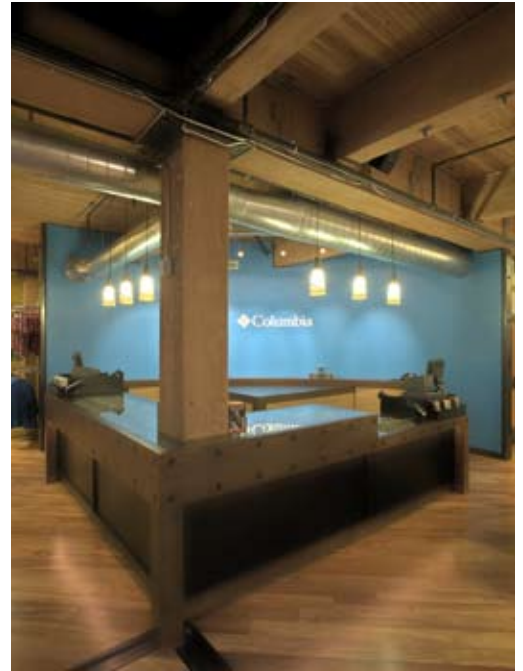
\$1 million

Contact

Craig Stockbridge,
Project Manager / GBD
Architects / 503.224.9656

This fast-track, flagship store project centered around a 18,000 SF renovation of two floors of the United Carriage Building—a historic wood frame structure in downtown Portland.

Interface provided mechanical and electrical design services, including plumbing, HVAC, power distribution, security, fire/life safety, and seismic upgrades to all systems throughout the building. One of the challenges of the mechanical systems was integrating a new water source heat pump into the existing heating and cooling system. The space included an atrium that spanned five floors. The atrium height and budget constraints provided an opportunity for unique design solutions for the fire protection and alarm systems.



Interface's lighting department provided interior and exterior lighting design, including custom designed projections of the store, which are focused on the sidewalks at night. This suggests the store to be open when it is actually closed.