

# Sorouh Headquarters

ABU DHABI, UNITED ARAB EMIRATES

## Services

MEP Engineering  
Sustainable Design  
Building Technologies  
Lighting

## FAST FACTS

### Architect

RW Armstrong

### Completion

In Design

### Building Size

6,876 m<sup>2</sup>

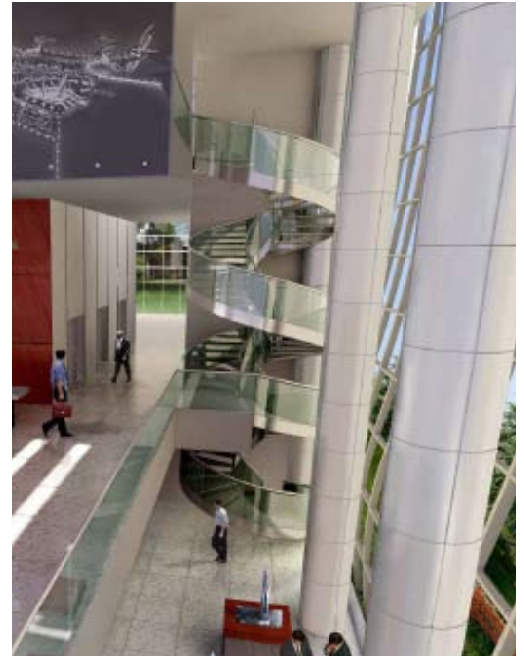
### Project Cost

\$18 million USD

### Contact

Habib Shehadeh /  
RW Armstrong /  
hshehadeh@rwa.com

Renderings: Arquitectonica



**S**orouh Real Estate is the largest Abu Dhabi-based, publicly listed real estate developer. They are a cutting edge developer currently undertaking the planning of 22 million square meters of land, several of which are also part of the Interface Engineering portfolio.

Currently in design, Sorouh will break ground for their own new headquarters in the Fall of 2008. The curvilinear building will consist of office space and a parking garage. The developer is knowledgeable in high-performance building design and is calling for sophisticated, advanced systems. Interface, as the mechanical and electrical engineer, is helping Sorouh attain a high-performance, energy efficient building by reviewing an integrated ceiling grid design which incorporates the lighting and supply and return air distribution systems. Interface also investigated extensive energy recovery elements like ventilation, lighting controls, and occupancy VAV systems.

Air temperature and smoke control systems were seamlessly incorporated in the building's atrium.