

# Tyco Precision Interconnect

WILSONVILLE, OREGON

## Services

MEP Engineering  
Lighting

### FAST FACTS

#### Architect

Group Mackenzie

#### General Contractor

Baugh Construction Oregon

#### Completion

November 2001

#### Building Size

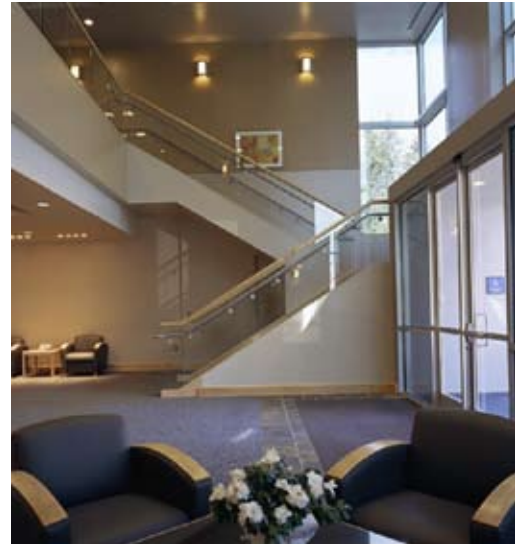
265,000 sf

#### Construction Cost

\$13 million

An accelerated project schedule for Tyco Precision Interconnect's new manufacturing facility in Wilsonville required precision in the form of collaboration between the owner and a large design/build team. The project was completed in just eleven months to meet demanding production schedules.

By working closely with Precision to determine specific needs in each area of the building, Interface supplied the contractors with the detailed information they needed to provide fixed-cost estimates for mechanical and electrical systems throughout the facility. In this way, Interface helped the project developer, Specht Wilsonville, guarantee Precision a firm price for construction of the new plant.



Crucial to the project was Interface's accuracy on scope documents that took into account Precision's specialized needs for its facility.



The facility sits on a 20-acre site and features 200,000 sf of manufacturing space, with room to include an additional 100,000 sf.