

Veterans Affairs Medical Center Transplant Lodging Unit

VANCOUVER, WASHINGTON

Services

MEP Engineering
Building Technologies
Fire/Life Safety
Lighting

FAST FACTS

Architect

Peck/Smiley/Ettlin
Architecture

General Contractor

Todd Construction

Completion

April 2005

Building Size

23,000 sf

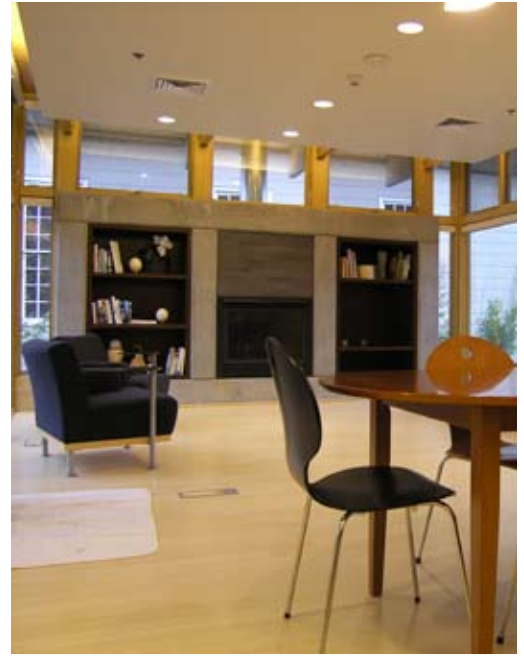
Project Cost

\$5.1 million

Contact

Hans Ettlin, AIA
Peck/Smiley/Ettlin
Architects
503.248.9170

Photography: Peck Smiley Ettlin



The Veterans Affairs Transplant Lodging Unit is a 66-bed facility to house recovering transplant patients. The building is comprised of three wings in a “C” formation around a central courtyard. Two wings house patient rooms with the third featuring administrative and medical offices as well as laboratory services. The facility includes 3,000 SF of space for a compensated work therapy program and includes a computer classroom. The occupancy is considered residential not institutional.

Interface provided design of HVAC, electrical power distribution, lighting, fire alarm and low-voltage systems. The mechanical equipment is located in the attic over the common areas. Air conditioning is provided in the living units and the common areas. A high-efficiency gas furnace provides heat to the office and through the walls.

Designed to the Department of Veterans Affairs standards, Interface specified equipment that will give the facility lower long-term life cycle benefits without adding extra cost to the project.